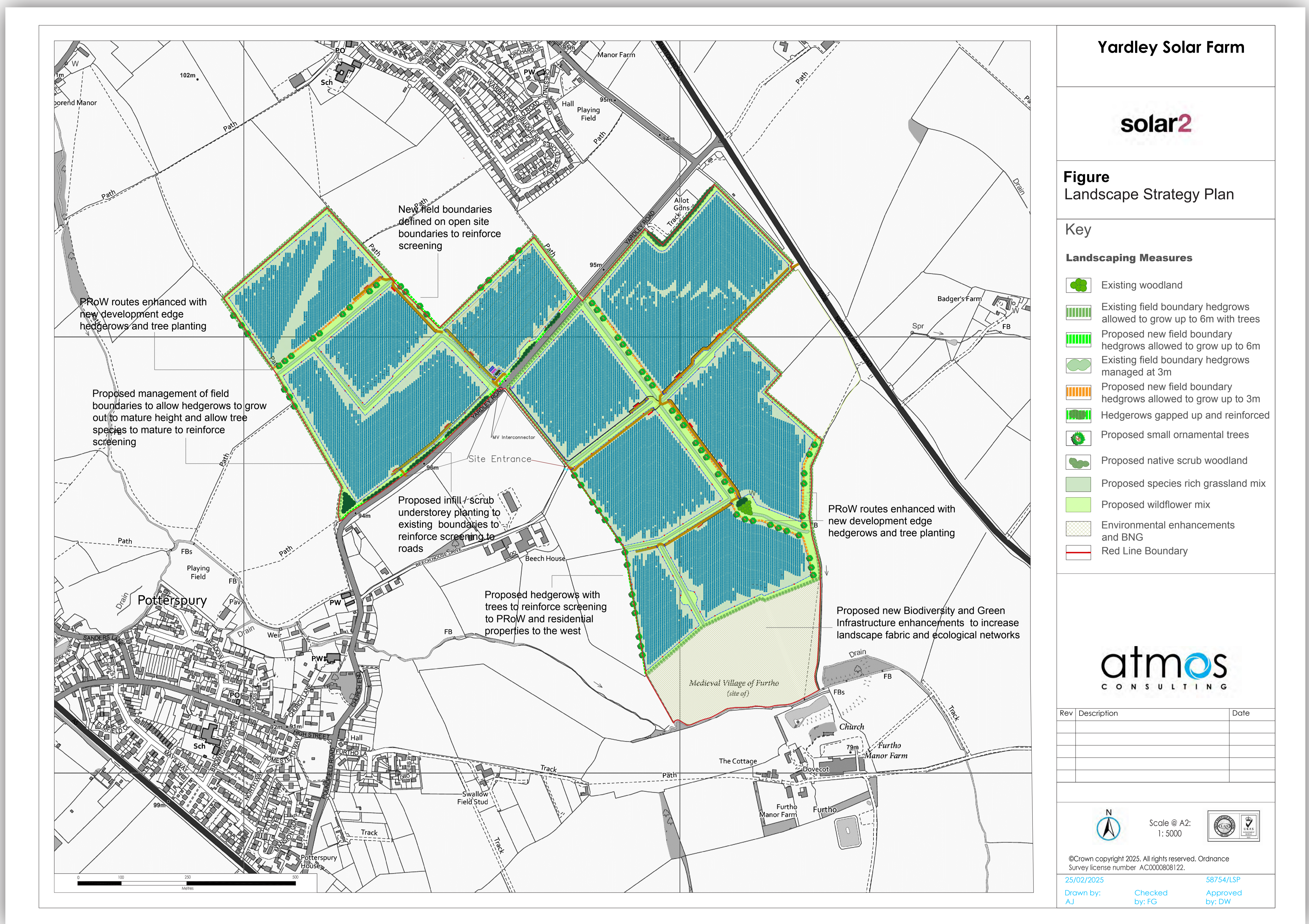


Yardley Road Solar Farm

Proposals



The proposals include a 40MW solar farm, which, if consented, will generate enough clean energy to power 15,000 homes, offsetting 22,000 tonnes of carbon dioxide annually.

The site covers approximately 70 hectares (173 acres), though not all land within the red line boundary will be developed with solar panels. Remaining land will provide opportunities for landscape and ecological enhancements.

In addition to generating electricity, we are introducing several features to enhance the local environment:

- The land will remain usable for sheep grazing.
- Beehives may be introduced to increase local bee population.
- Wildflower meadows could be planted to attract birds and insects.
- After 40 years, the solar farm will be decommissioned, with the panels removed and recycled, leaving behind decades of biodiversity improvements.



RECURRENT ENERGY
A subsidiary of Canadian Solar

solar2

